

**Historical Landmarks Preservation Commission**

Application for a Certificate of Approval

Date MARCH 27, 2024

Name of Applicant ROBERT H GREGORY

Address of Applicant 32 EAST GENESEE ST.

Telephone: Home 315-685-9003 Business RETIRED

Email RHGREGORY@ROADRUNNER.COM Cell \_\_\_\_\_

Application for Signage Only? (Y/N) N

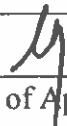
Address of the building, structure or property where the proposed changes or construction is located, or where the sign is located: \_\_\_\_\_

Owner of the above building, structure or property (If not the applicant):

Name \_\_\_\_\_ Phone \_\_\_\_\_

Address \_\_\_\_\_

Description of the work proposed: REPLACE 11 DOUBLE HUNG WINDOWS WITH PELLA IMPERVIA WOOD WINDOWS WHICH ARE IDENTICAL WITH THE BUILDINGS ORIGINAL WOOD WINDOWS

  
Signature of Applicant

For Office Use:

Date Application Received \_\_\_\_\_ Date of Public Hearing \_\_\_\_\_

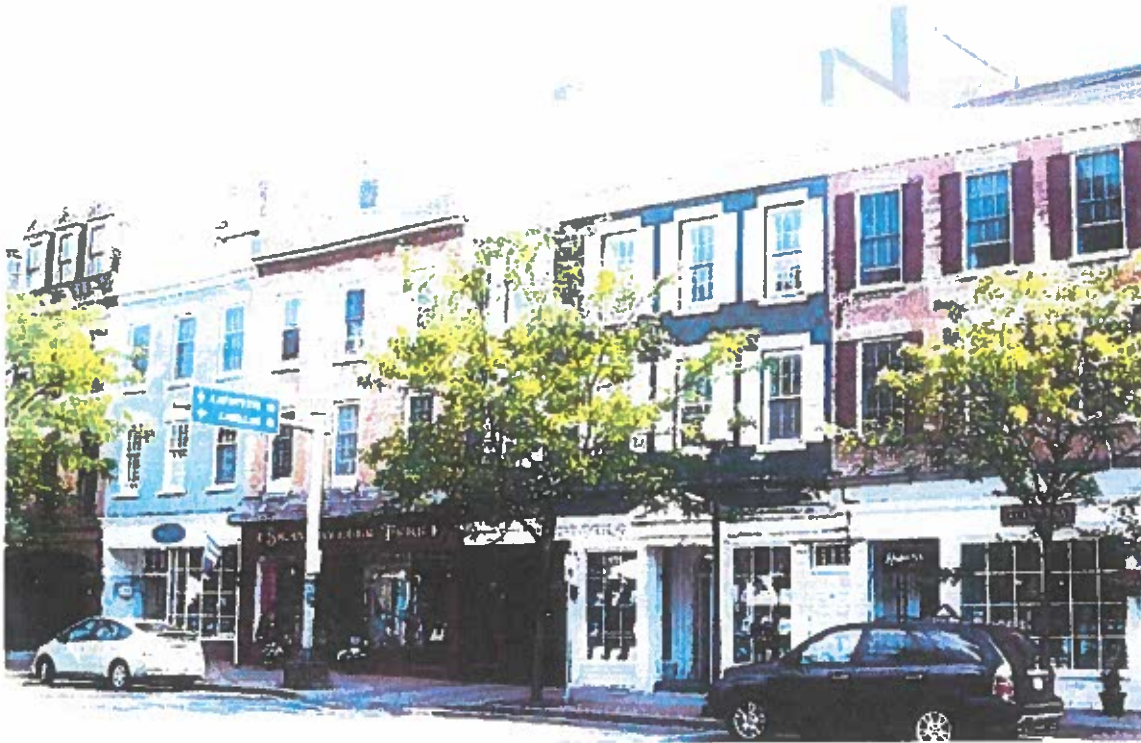
Fee \$ \_\_\_\_\_ Date Paid \_\_\_\_\_ Tax Map Number \_\_\_\_\_

Cert. of Approval Number \_\_\_\_\_ Dated \_\_\_\_\_ Sign/Bldg. Perm. # \_\_\_\_\_

VILLAGE OF SKANEATELES

MAY 28 2024

## Village of Skaneateles Historic District Design Standards and Guidelines



The Village of Skaneateles Board of Trustees developed the Historical Landmarks Preservation Committee to protect, enhance, perpetuate and preserve historical landmarks including buildings and permanent structures to promote the education, pleasure and general welfare of the citizens of the Village. The Committee takes into account the fact that the high quality of life enjoyed by Village residents is in large measure, a result of the physical design, historic character and appearance of the Village center. The Village's traditional "Main Street" development pattern is characterized by an inviting and attractive street environment that encourages informal interaction among residents, merchants, and visitors. This interaction is enlivened by the closely interwoven combination of residential, retail, service, office and other nonresidential uses. The lively street environment is a valuable public space that attracts tourists who support local merchants and provide an important economic stimulus to the community. The economic and social vitality of the Village and Town of Skaneateles is dependent on maintaining the attractiveness of this street environment, the economic viability of Village businesses and the hospitable ambiance residential occupants appreciate.

The following standards have been developed by the Historical Landmarks Preservation Committee to provide guidance for property owners seeking exterior changes to their property, as well as to establish a consistent and objective review of those changes.

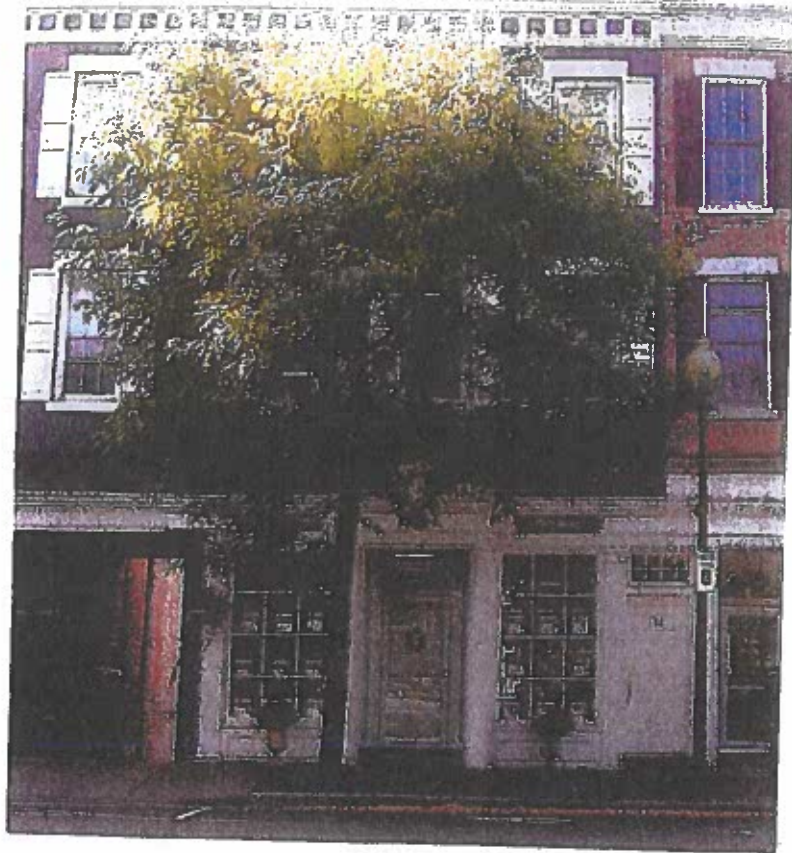


1924

1924

1924

SEPTEMBER 2020



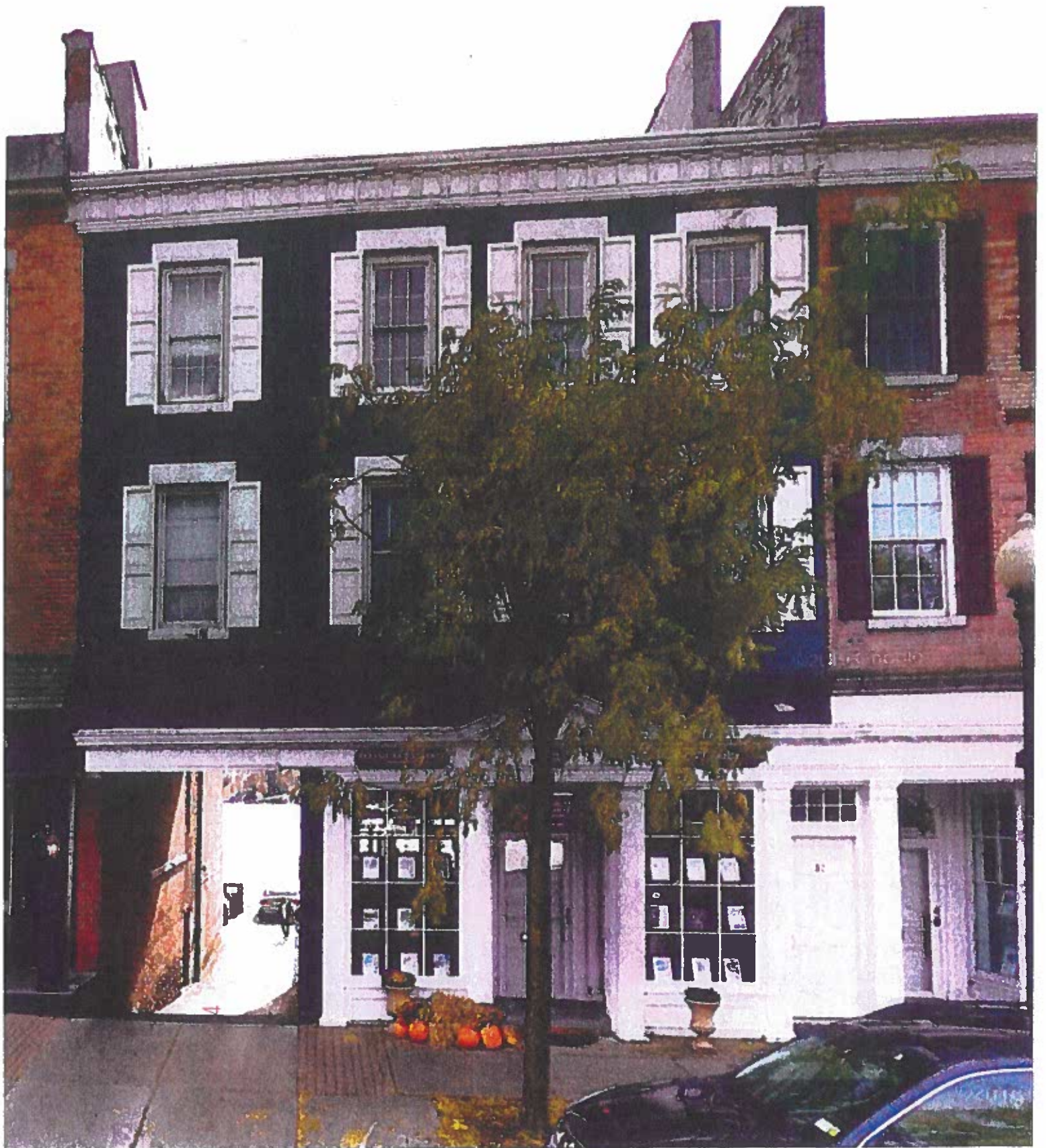
AUGUST 2015

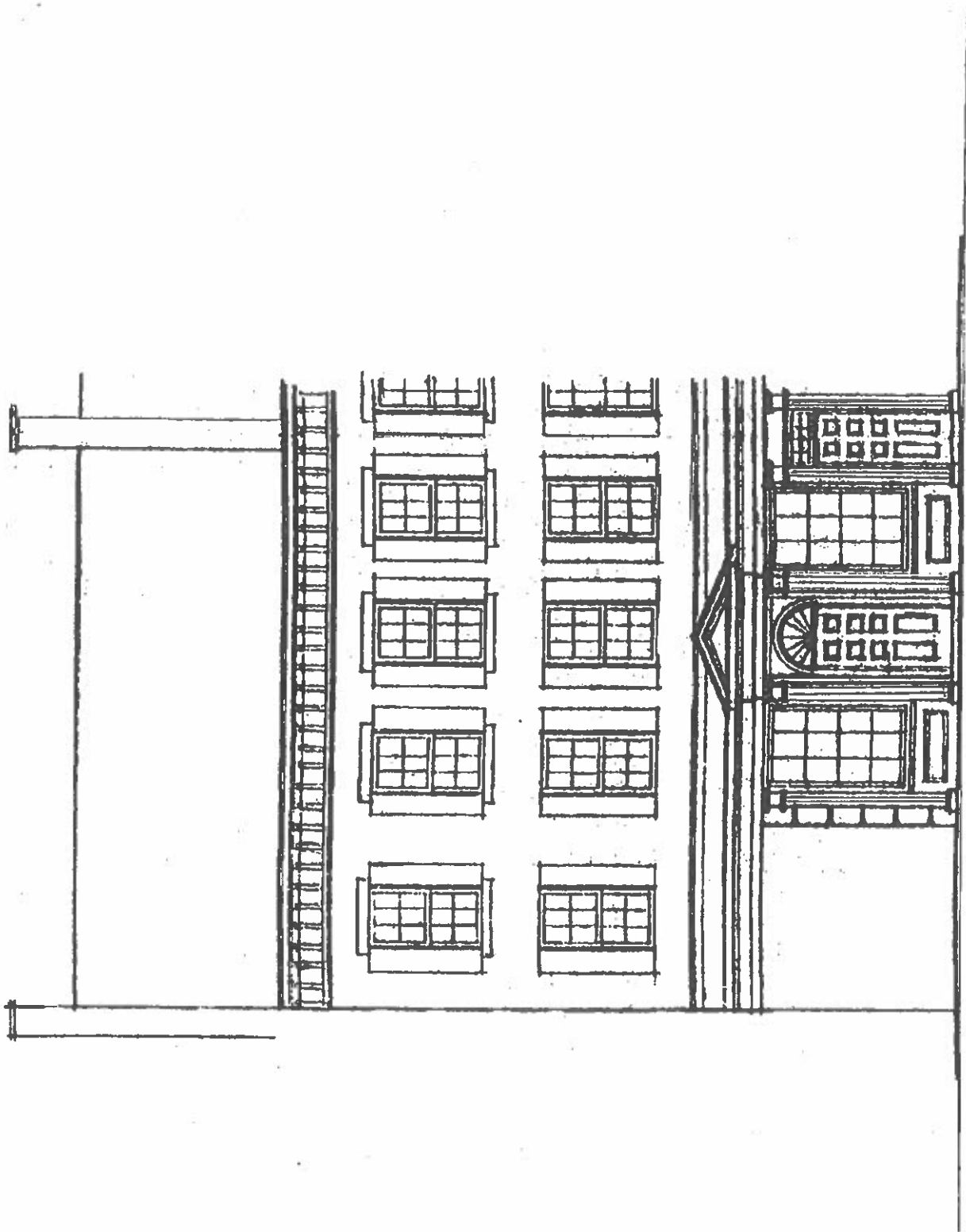


RECEIVED

MAY 14 2024

1000 1/2 W. 10th St. S. #100





RECEIVED

MAR 28 2024

VILLAGE OF SKANEATELES

March 27, 2024

Historical Landmarks Preservation Committee  
Village of Skaneateles  
26 Fennell Street  
Skaneateles, New York 13152

Enclosed is my application to replace 11 double hung windows on my building at 32 East Genesee Street. I have chosen the Pella Impervia which is a wood window identical to this building's original wood windows. This pretty much completes the 67 years of restorations on this 186 year old building.

Sincerely,

  
Robert Gregory  
313-685-9003  
rhgregory@roadrunner.com

P.S. I have enclosed ~~three~~ <sup>SIX</sup> booklets outlining my efforts to preserve this landmark building built in 1838.

DOWNLOADED FROM PELLA WEB SITE



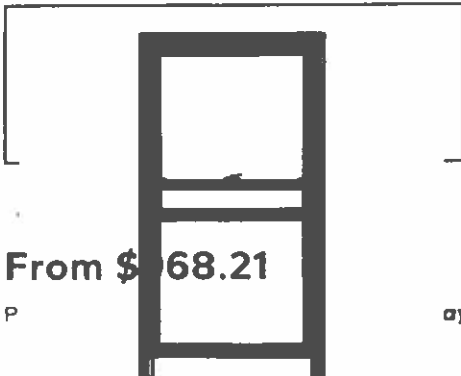
### PELLA® IMPERVIA® Fiberglass Double-Hung Window

3.76 ★★★★★ 529 Reviews

Pella Impervia fiberglass double-hung windows provide outstanding resistance to water, wind and outside noises – while delivering energy efficiency, security and ease of operation. But you don't have to sacrifice performance for style. Clean sightlines provide a consistent aesthetic. And our powder-coat finish gives a durable finish which resists chalking, fading and scratching.

- Commercial grade strength and performance <sup>15</sup>
- Exclusive cam action lock design improves the security of the window and creates a stronger seal
- Sashes tilt in, allowing you to easily clean the exterior of your windows from inside your home
- Product #400001

Configuration: 1-wide



From \$168.21

P

ayPal [Learn more](#)



BUILD & ADD TO CART



**CONTACT A PELLA REP**

- ✦ Others are building this window!
- 🛒 This window has been built 1645 times this month

HOW TO GET ONLINE ORDERS

 Job Site Delivery

 Free Warehouse Pickup

[Enter your address to see available options](#)

## Pella Impervia Double-Hung Windows Features



No Painting or Refinishing

## Design Options

**BUILD & ADD TO CART**

Prairie

Traditional

Top Row

Custom

No Grilles

## Downloads & Specifications

Design & Performance



Specifications



2D Cross Section



2D Elevation



[Unit Sections](#)

Sell Sheets



[Unit Sections](#)



### PELLA IMPERVIA DOUBLE-HUNG WINDOW SPECS & INSTALL DETAILS



- Timeless style and proven performance with unmatched strength and lasting durability
- Handles the most extreme heat and cold<sup>9</sup>
- Interlocking checkrail creates a barrier for air and water infiltration
- Double-hung windows available in sizes up to 47-1/2" x 79-1/2"
- Performance class and grade LC30-LC50

#### Frame

- Nominal wall thickness of Duracast fiberglass composite members is .050" to .080" thick
- Frame corners are mitered, joined and bonded with corner locks and mechanically fastened with injected polyurethane adhesive
- Frame has 10° slope sill

#### Sash

All sash members have mitered corners bonded with corner locks and sealed with injected polyurethane adhesive

#### Weatherstripping

- Fin-type pile on jambs, top rail and stile of upper sash
- Vinyl-wrapped foam at sill on frame and bottom rail of lower sash

### Glazing System

- Quality float glass complying with ASTM C 1036
- 11/16" insulating glass sealed and bonded to sash
- High altitude glazing available

### Hardware

- Galvanized block-and-tackle balances connected to sash with polyester cord and concealed within the frame
- Two locks are installed on units 37" wide or greater
- Locks are zinc die-cast, self-aligning cam action factory-installed on the interlocker to match finish

### Additional Hardware options

- Optional limited opening device available for field installation on vent units in foamed PVC to match interior of unit, nominal 3-3/4" opening
- Device allows window to open less than 4" with normal operation, with a release mechanism that allows the sash to open completely. Complies with ASTM F2090-10.

## Pella Impervia Reviews

SEE ALL REVIEWS

April 1, 2022

★★★★☆

### Why Choose Pella

Competitive price for the quality. Excellent sales person

Polly P.



## Frequently Asked Questions

## FAQs about My Product

Are fiberglass windows better than vinyl?



How long do fiberglass windows last?



What is the difference between single-hung and double-hung windows?



How do I clean a double-hung window?



## FAQs about Purchasing Online

For online orders, what is your policy for returns and products damaged during shipping?



Who will install the products I ordered?



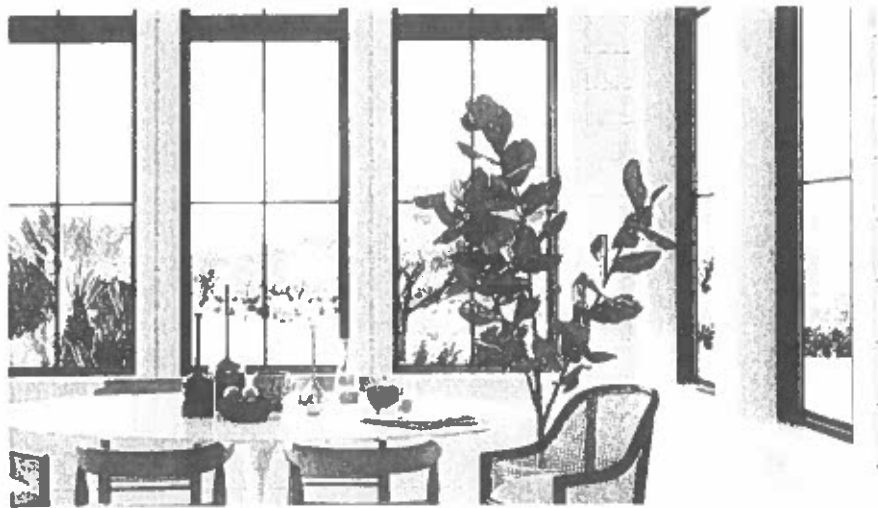
How long will it take to receive my online order?



What's included in my online window and door purchase?

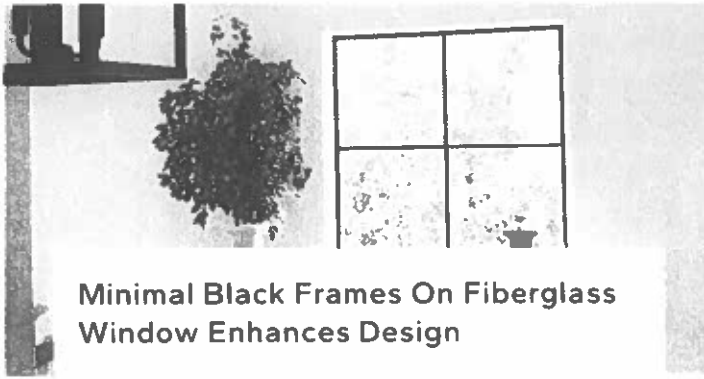


[SEE ALL WINDOW FAQs](#)



LEARN MORE ABOUT PELLA IMPERVIA WINDOWS

Inspiration



**Minimal Black Frames On Fiberglass Window Enhances Design**



**Black Windows With White Trim Creates A Classic Look**

## Other Pella Impervia Products



**PELLA® IMPERVIA**  
Fiberglass Sliding Door

ONLINE PRICING

**From \$3,855.96**



## Fiberglass Window Tips & Advice



### The Pros and Cons of Fiberglass Windows

Explore the pros and cons of fiberglass windows, comparing how the material stacks up against vinyl and wood

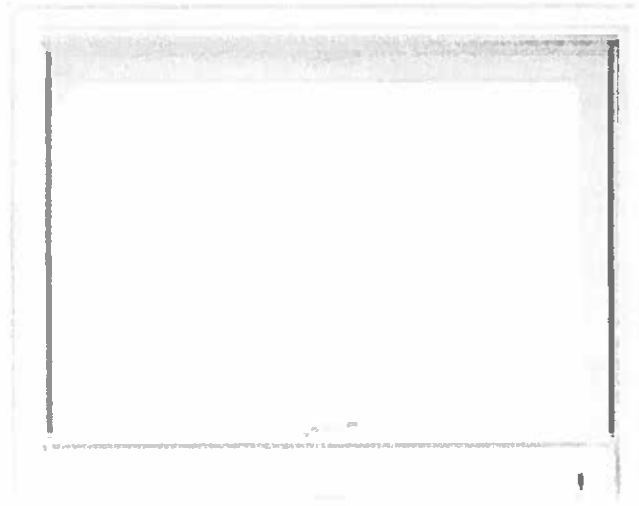


### The Ultimate Guide to the Window Replacement Process

Follow this step-by-step process for guidance on how to replace windows, from beginning to end

**SEE ALL WINDOW TIPS & ADVICE**

## Compare Double-Hung Windows



[Energy Methodology](#)

[Privacy Policy](#)

[Terms of Use](#)

[Product Performance](#)

[Website Accessibility Statement](#)

[California Supply Chain Act](#)

[California Rights Policy](#)

[California Collection Notice](#)

[Do Not Sell My Information](#)

# Pella® Impervia® Double-Hung Window

## Detailed Product Description

### Frame

---

- Frame is Duracast™ fiberglass composite — five-layer pultruded fiberglass material [with optional foam insulation<sup>1</sup>] reinforced with a Pella patented interlocking mat.
- Nominal wall thickness of Duracast fiberglass composite members is .050" to .080" thick.
- [Overall frame depth is 3" for [Block Frame] [Integral Nailing Fin] [Overall frame depth is 3-1/4" for Precision Fit]
- Frame corners are mitered, joined and bonded with corner locks and mechanically fastened with injected polyurethane adhesive.
- Block frame jambs contain factory drilled (counter-bored) installation screw holes
- Frame has 10° slope sill

### Sash

---

- Sash is Duracast fiberglass composite—five-layer pultruded fiberglass material [with optional foam insulation<sup>1</sup>] reinforced with a Pella patented interlocking mat.
- All sash members have mitered corners bonded with corner locks and sealed with injected polyurethane adhesive.
- Both sashes tilt to interior for cleaning.

### Exterior/Interior

---

- Duracast fiberglass composite surfaces with powder-coat paint finish.
  - Color is [White] [Brown] [Black] [Tan] [Morning Sky Gray].
- Dual-color option [Brown] [Black] exterior with White interior<sup>2</sup>.

– or –

### Glazing System

---

- Quality float glass complying with ASTM C 1036.
- 1 1/16" insulating glass [[annealed] [tempered]] [obscure<sup>3</sup>] [[clear] [Advanced] [SunDefense™] [SunDefense+] [AdvancedComfort] [NaturalSun] [NaturalSun+] Low-E coated, with argon]] sealed and bonded to sash.
- High altitude glazing [with argon] available

### Weatherstripping

---

- Fin-type pile on jambs, top rail and stile of upper sash.
- Vinyl-wrapped foam at sill on frame and bottom rail of lower sash.

### Hardware

---

- Galvanized block-and-tackle balances connected to sash with polyester cord and concealed within the frame.
- Upper and lower sash are fully operable for ventilation.
- All fasteners are corrosion-resistant material.
- Two locks are installed on units 37" wide or greater.
- Locks are zinc die-cast, self-aligning cam action factory-installed on the interlocker [powder-coat painted [White] [Brown] [Matte Black] [Tan] [Morning Sky Gray] to match finish] [Satin Nickel] [Bright Brass] [Oil-Rubbed Bronze].

### Optional Products

---

#### Screens

- InView™ Screens
  - [Half-size] [Full-size] with black vinyl coated 18/18 mesh fiberglass screen cloth complying with SMA 1201
  - Set in aluminum frame and fitted to outside of window.
  - Supplied complete with all necessary hardware.
  - Screen frame finish is baked enamel, color to match exterior.

#### Grilles

- Grilles-Between-the-Glass
  - Insulating glass contains 3/4" contoured aluminum grilles permanently installed between two panes of glass.
  - Grilles are factory prefinished [White] [Brown] [Black] [Tan] [Morning Sky Gray] to match interior and exterior finish.

#### Hardware

- Optional limited opening device available for field installation on vent units in [White] [Brown] [Black] [Tan] [Morning Sky Gray] foamed PVC to match interior of unit; nominal 3-3/4" opening.
- Optional window opening control device available for field installation. Device allows window to open less than 4" with normal operation, with a release mechanism that allows the sash to open completely. Complies with ASTM F2090-10.
- Optional field applied Duracast sash lift available for vent units in [White] [Brown] [Black] [Tan] [Morning Sky Gray].

(1) Foam insulation inserts are not available with clear glazing.

(2) Dual-color finish is not available on products with integral nailing fin.

(3) Obscure glazing is not available when AdvancedComfort Low-E coated IG is specified.



