

Village of Skaneateles
Historical Landmarks Preservation Commission
June 10, 2009

*Special meeting for a modification to the Seitz Building, 3-7 Jordan Street For the Kabuki
Restaurant, 12 West Genesee Street*

Present: Charles Williams, Chairman
Karlene Miller, Member
Katharine Dyson, Member
Kihm Winship, Member
Pat Blackler, Member
Mona Smalley, Member
David Neibert, Member
Mary Fran Strodel, Member

Jorge Batlle, Clerk to the Historical Commission
Robert Eggleston, Architect for the Applicant (Eberhardt/Kabuki)

Absent: Andrew Ramsgard, Member

Chairman Williams opened the meeting at 8:03pm. Robert Eggleston Architect for Bill Eberhardt who is the tenant of the Kabuki space. We have come back before because we wanted to add the exhaust fan. At the time I was unaware that there was an intake – and as large as it was. Once we got the right installer in with the right information. Then the next question is, where was it? So I wasn't able to bring it back last month because no one could quite decide exactly where the intake would be.

So we have placed it to meet the Code it has to be placed a certain distance from the exhaust. We will paint it out the same color as the siding just to make it disappear. We are kind of a little bit limited on where it could go. I think the fact that it is on the most unseen side is the best. It's on the back. It's on the north side so it's really not visible." The Chairman asked, "the ground slopes like this on the north side?" Eggleston said, "yes." The Chairman said, "for going down into the basement." Eggleston said, "yes, for going down into the basement."

Eggleston continued, "just to be anal, there was a direct vent exhaust over here that we took out and we moved it over here. It was a change and I wanted to make sure that you are aware of it." Member Blackler asked, "why did you do that?" Eggleston said, "because they put in a new furnace. For some reason, the way the beam is and this and that, they wanted to go in a different location. I just wanted to be up front about it."

Member Neibert asked, "is that exhaust fan hood, is that painted to match the siding too so it kind of blends?" Eggleston said, "it comes the aluminum color and we can paint it. We can paint it the siding color to match." Member Neibert said, "yes, I would like that. So it is not just

this big aluminum thing sticking out on the side.” The Chairman said, “the diameter is there.” Member Winship said, “it is kind of in a corner in the back.” The Chairman said, “sort of like the Stone Mill.” Member Neibert said, “you paint it the color of the siding of the building. At least it disappears a little bit.” Eggleston said, “until the fire it up for a couple of days. Actually it might be a little more little less distracting than the grease that might accumulate on it.”

Member Miller said, “I notice that the Kabuki is open now.” Eggleston said, “that’s what I understand – they were doing some test runs there.” The Chairman asked, “this will be a RustOleum stove pipe paint?” Eggleston said, “I have to check that if we just paint it, it just doesn’t bubble off, or char – on the exhaust fan. Maybe we would be just better off just leaving it the mill finish aluminum. It is what it is. And then we’ll paint this one to make this one kind of blend in.” The Chairman said, “you could try a piece of the exhaust, then it’s going to get greasy. Then you have to degrease it.” Eggleston said, “like you say, the heat coming out of there is pretty severe. So you paint it and it looks good for a week. Then it starts bubbling.” Member Miller said, “better to leave it like it is.” The Chairman said, “sort of a cream finish. If it was black you wouldn’t notice it.” Member Neibert asked, “so it is not just bright aluminum looking?” Eggleston said, “no. It’s that real dull finish.”

Eggleston continued, “just to give you a heads up, I noticed on the original submission they had an exhaust fan for the Morris’ space there, but they don’t have an air intake either. So, “you can expect Andy to come back with that.”

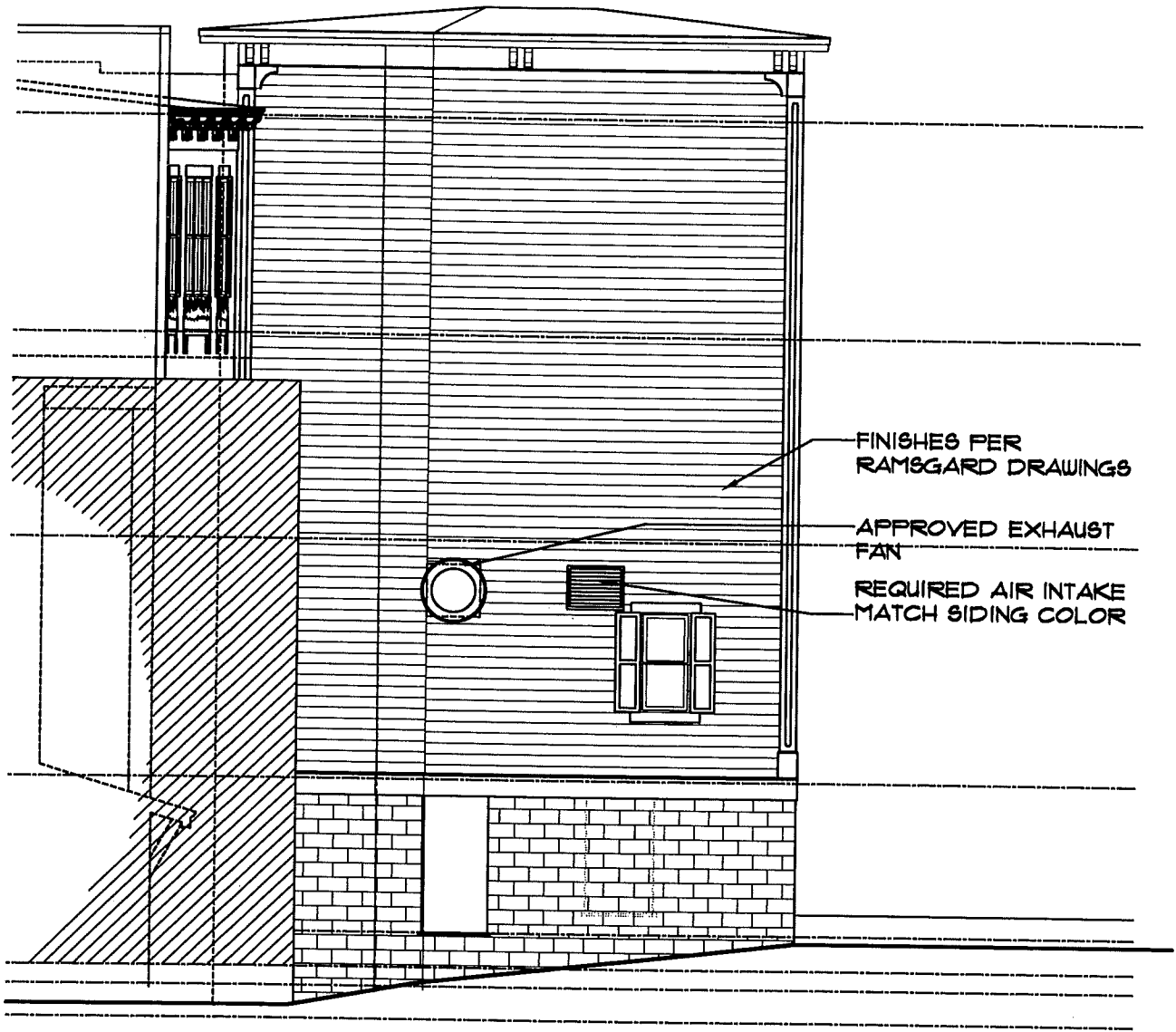
Member Blackler asked, “so you are doing the ??? too, not just Eberhardt.” Eggleston said, “actually I’m doing Kabuki for Eberhardt. And these are changes that we made, so I brought them in. But it’s interesting that there wasn’t an air intake on the drawing that Andy presented. The best of them can miss air intakes.”

Member Miller said, “**I make a motion that we approve this as presented (air intake) painted to match the siding and the relocated exhaust. This is per drawing dated 6-4-09. The exhaust fan to remain as it is.**”

Member Neibert asked, “the exhaust pipe for the furnace, is that above head height?” Eggleston said, “actually, it is now. It wasn’t before. It is about 76 inches above.” The Chairman asked, “is it straight or a ‘T’?” Eggleston said, “it is straight. And that has the air intake built into it.”

Seconded by Member Neibert. The vote was 8-0 in favor of the motion. The meeting was closed at 8:10pm.

email to: Eggleston, Williams, Gorelick
" cc: Ramsyard



NORTH ELEVATION

1/8" = 1'-0"